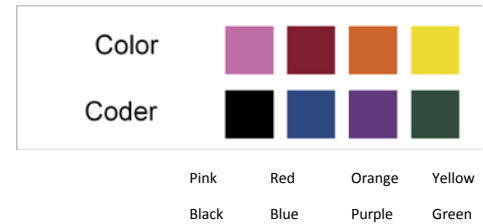


**Product Specification Sheet**



- Traditional chain style cuff
- Hardened steel
- Oversize (OS) 17% larger than standard
- Non-reflective dull nickel finish
- NIJ compliant
- Pick Shield XLS™ for pick and bump resistance
- Edge “Double-Lock” system
- Dual ratchet engaging independent retaining bars
- “True Swing” technology
- Positive Clickbak® loading
- High visibility Gorcote® colors

<b>Model</b>	1108, 1108C
<b>Description</b>	Handcuff
<b>Style:</b>	Chain
<b>Material</b>	Hardened Carbon Steel
<b>Special Features</b>	Hardened Dual Ratchet Pick Shield XLS™
<b>Weight</b>	312 g / 11 oz
<b>Length:</b>	235 mm / 9.25
<b>Max Width</b>	82 mm / 3.23 in
<b>Min Width</b>	51 mm / 2.00 in
<b>Max Height</b>	58 mm / 2.20 in
<b>Min Height</b>	55 mm / 2.17 in
<b>Max Int. Circle</b>	228 mm / 9.00 in
<b>Min Int. Circle</b>	160mm / 6.30 in
<b>Locking Positions</b>	23



PickShield XLS™



Dual Ratchet